

CB 动力押扣开关 Power Pushbutton Switch



特点 Features

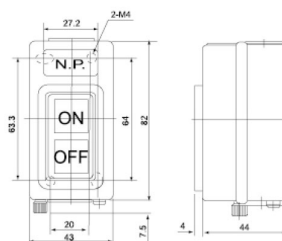
- 塑料外壳与金属外壳可供选择
- Plastic shell and metal shell are for selection

规格 Specifications

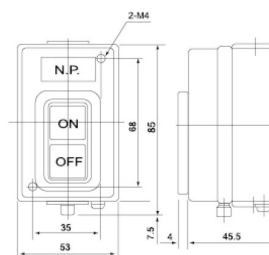
型式 Model	规格 Spec.	安装型式 Mounting type	接线端子 Connection terminal	外壳材质 Material
CBSN-310	3 φ 10A 1.5KW	露出型 Surface mounting	M3.5	铁烤漆 Iron
CBSN-315	3 φ 15A 2.2KW		M4	
CBSN-330	3 φ 30A 3.7KW		M5	
CBSP-315	3 φ 15A 2.2KW	露出型 Surface mounting	M4	强化塑胶 Plastic
CBSP-330	3 φ 30A 3.7KW			
CBSY-315	3 φ 15A 2.2KW	埋入型 Flush mounting	M4	铁烤漆 Iron
CBSY-330	3 φ 30A 3.7KW			
CBSS-315	3 φ 15A 2.2KW	埋入型 Flush mounting	M3.5	铁烤漆 Iron
CBSS-330	3 φ 30A 3.7KW		M4	
CPB-2	3A 250VAC	露出型	M4	强化塑胶 Plastic
CPB-3	3A 250VAC	Surface mounting		

外观和尺寸 Appearance and Dimension

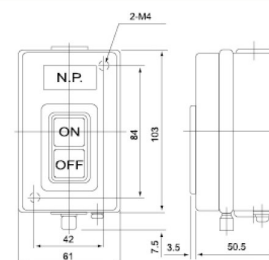
CBSN-310



CBSN-315

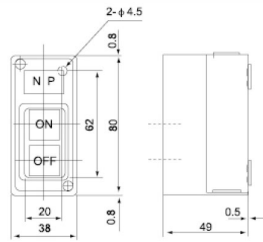


CBSN-330

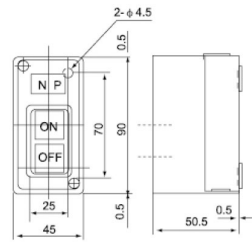


外观和尺寸 Appearance and Dimension

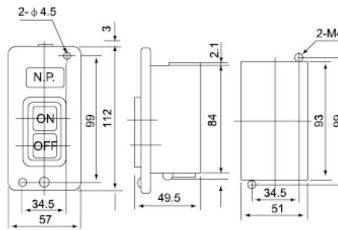
CBSP-315



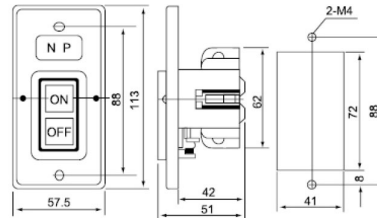
CBSP-330



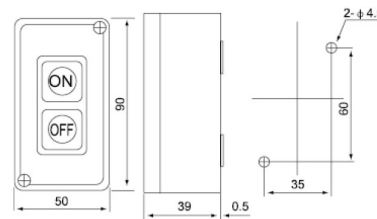
CBSY-315
CBSY-330



CBSS-315
CBSS-330



CPB-2



CPB-3

